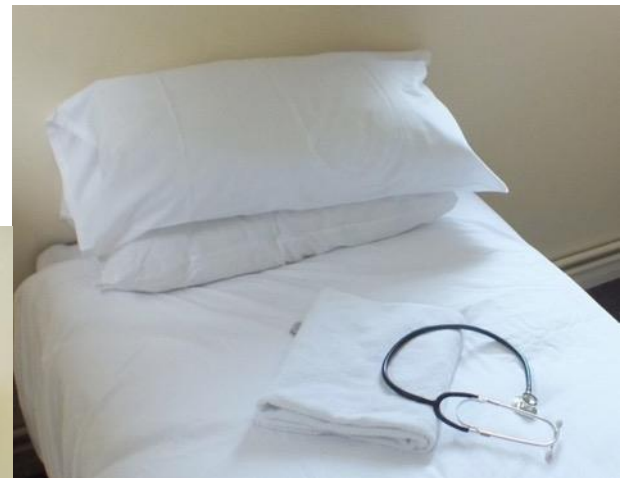


Staff Accommodation  
Queen Elizabeth Hospital Kings Lynn  
Gayton Road  
Kings Lynn  
PE30 4ET

Tel: 01553 405062

Email: [QEH@oakhousing.org](mailto:QEH@oakhousing.org)

The residences are located to the rear of the hospital site overlooking a wooded area. They were extensively refurbished in 2008 and a rolling programme of upgrades is now underway. They provide basic letting options for NHS employees.



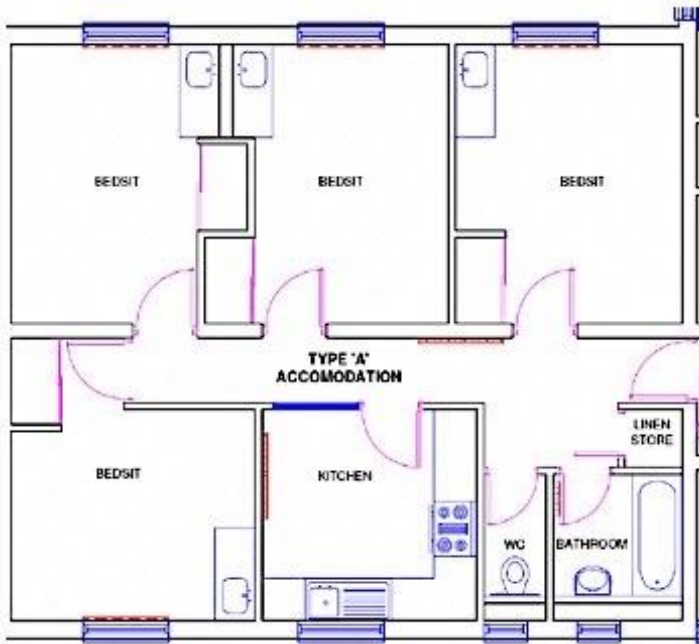
#### Types of Flat

Example floor plans and photographs are included below but actual layouts may differ. You are welcome to come and review our accommodation prior to booking if you wish.

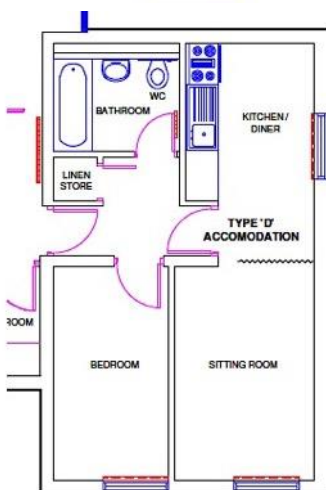
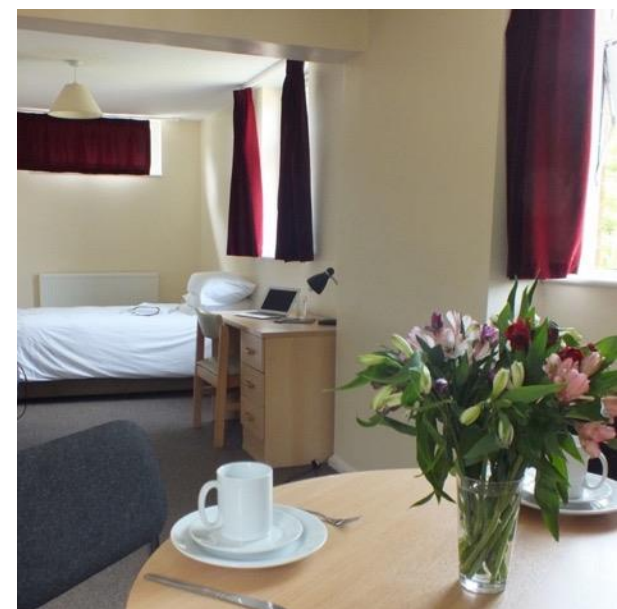
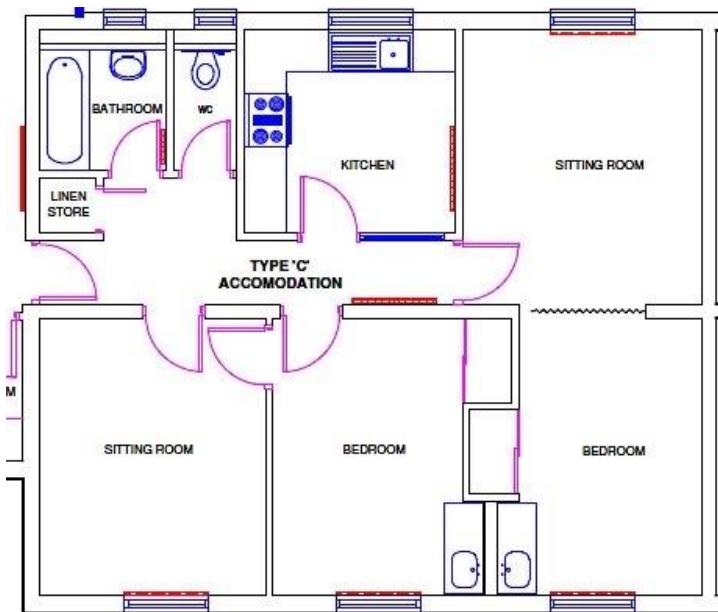
Our most competitively priced accommodation are Study Bedrooms in a shared flat. We have 213 of this type of accommodation. Up to four guests share a bathroom and kitchen



Below is a floor plan of our bedsit accommodation.

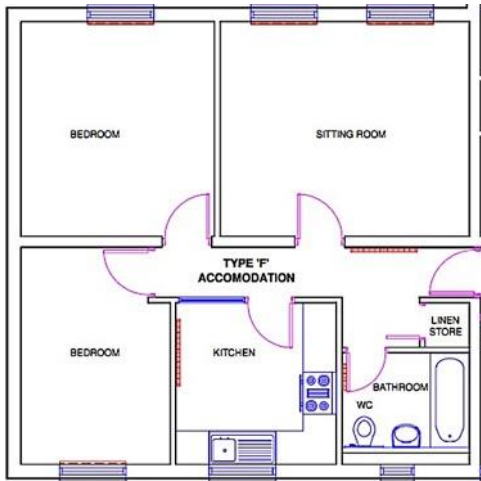


We have 23 flats where guests share a kitchen and bathroom but have a private bedroom and adjoining lounge.



There are 8 one bedroom self contained flats

Finally we have 9 two bedroom family flats



### What is included in the rent?

All flats are fully furnished, kitchens include both cooker and microwave, and bathrooms include bath and shower. Bedrooms include a desk and easy chair many have a vanity sink.

All utility (gas water electricity) and council charges are included

A free Wi-Fi service is provided.

Linen is provided to bedsit and private lounge accommodation and laundered on a weekly basis.

Those in family or self-contained flats provide and launder their own linen.

On site parking is available for an additional charge and there is also a launderette for guests use.



## Prices

Our nightly rates reduce the longer you commit to stay. It will be cheaper to book for longer stay. Rates are not reduced if you later extend your stay.

Guests staying under 2 months (62 nights) will need to pay the full cost of their stay when booking.

Guests staying over 2 months:

- Will be asked to pay a refundable deposit equivalent to 1 months rent which will be protected under an independent scheme.
- In addition they will be asked to pay a month in advance throughout their stay.

Guests booking over 2 months will be offered an Assured Short hold Tenancy renewable every 6 months.

## Current Nightly Charges April 2024

Charge per night when you book for:						
Type	1 Night	7-30 Nights	31 to 90 nights	91 to 182 nights	183 to 365 nights	Over 365 nights*
Bedsit (A)	£62.80	£29.20	£24.70	£23.20	£22.60	£22.10
Bed and private lounge (C)	£77.80	£38.60	£32.90	£30.80	£30.10	£29.60
1 bed flat (D)	£89.70	£46.90	£39.80	£37.20	£36.40	£35.80
2 bed flat (F)	£104.50	£58.20	£48.60	£45.30	£44.30	£43.40
Notice Periods	24hrs	24hrs	2 weeks	1 month	1 month	1 month

Deposits when staying:					
Type	1 Night-61 Nights	2-3 months	3-6 months	6-12 months	1 year +
Bedsit (A)	Guests staying	£751	£706	£687	£672
Bed and private lounge (C)	up to 61 nights	£1,001	£937	£916	£900
1 bed flat (D)	pay in full to confirm	£1,211	£1,132	£1,107	£1,089
2 bed flat (F)	a booking	£1,478	£1,378	£1,347	£1,320

Our prices are reviewed every April and may increase. Payments can be made over the phone or in person at our offices. We accept payment from NHS bodies or other sponsoring agencies.

Call or email to discuss your particular requirements, we are happy to provide a quotation for your stay and advise you of current availability.

01553 405062

QEH@oakhousing.org